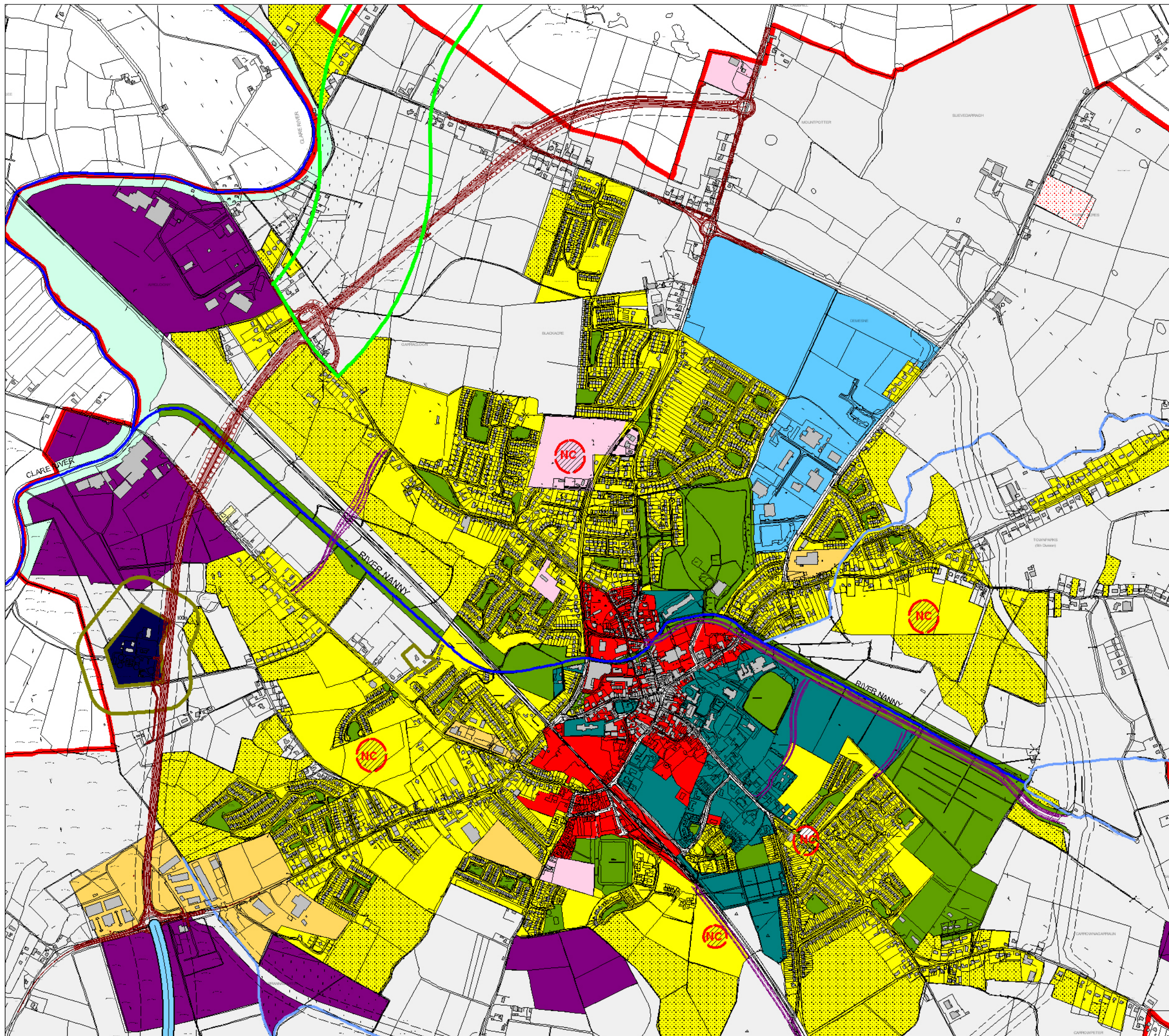


- LAP Plan Boundary
- EM - Environmental Management Area.
- R1 - Residential (Phase 1)
- R2 - Residential (Phase 2)
- C1 - Town Centre / Commercial
- C2 - Commercial / Mixed Use
- C - Commercial
- NC - Neighborhood Centre (Indicative)
- OS - Open Space / Recreation / Amenity & Green Network
- BT - Business and Technology Park
- BE - Business and Enterprise
- I - Industrial
- PU - Public Utilities
- Buffer Zone
- A - Agriculture
- CF - Community Facilities
- Inner Relief Road/Inner Relief Streets
- N17 Tuam Bypass Scheme (Type 2 Dual Carriageway)
- M18/M17 Gort to Tuam (Motorway)
- N17 Tuam to Claremorris Road Scheme



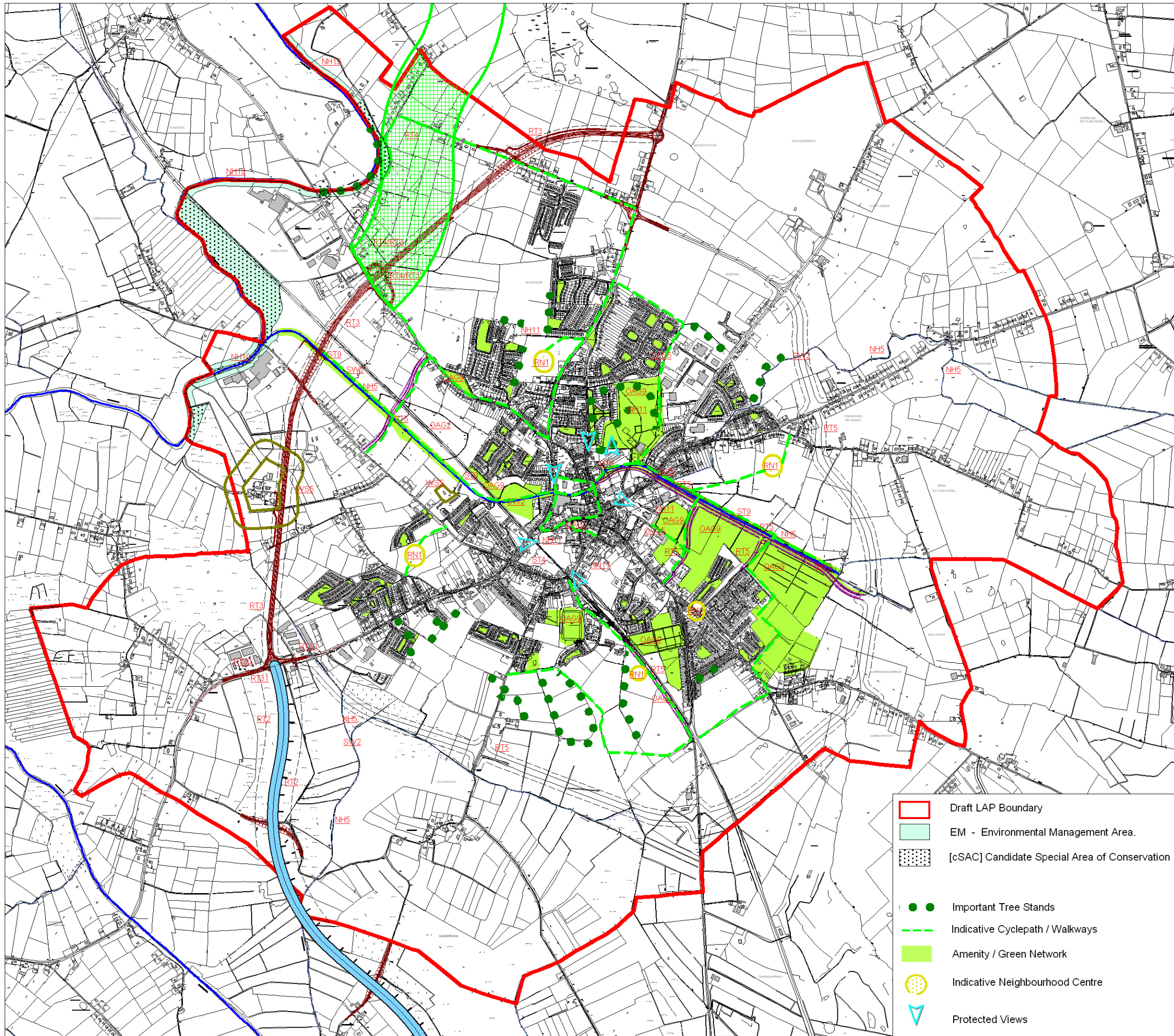
**TUAM LAP 2011-2017  
MAP 1A LAND USE ZONING**



- LAP Plan Boundary
- EM - Environmental Management Area.
- R1 - Residential.(Phase 1)
- R2 - Residential.(Phase 2)
- C1 - Town Centre / Commercial.
- C2 - Commercial / Mixed Use.
- C - Commercial
- NC - Neighborhood Centre (Indicative).
- OS - Open Space / Recreation / Amenity & Green Network
- BT - Business and Technology Park
- BE - Business and Enterprise.
- I - Industrial
- PU - Public Utilities
- Buffer Zone
- A - Agriculture
- CF - Community Facilities
- Inner Relief Road/Inner Relief Streets
- N17 Tuam Bypass Scheme (Type 2 Dual Carriageway)
- M18/M17 Gort to Tuam (Motorway)
- N17 Tuam to Claremorris Road Scheme



**TUAM LAP 2011-2017  
MAP 1B LAND USE ZONING  
(TOWN CENTRE)**



KEY	Description
S.3	SERVICES & INFRASTRUCTURE
S.3.1.3	Water services objectives
WS5	Provide/Protect 100m buffer around the WTP
	Appropriate buffer zones around any other TP
S.3.2.3	Surface Water & Flooding Objectives
SW2	Protect floodplains & areas along river banks
S.4	TRANSPORTATION & MOVEMENT
S.4.1.3	Sustainable Transport Objectives
ST4	Connect Mart Site to Railway Station
ST9	Develop River Nanny pedestrian greenway
	Strategic Routes
RT2	M18/17- Min. 90m building setback
RT3	N17 Tuam Bypass Scheme - Min. 35m building setback, Unless 400m Reservation applies.
RT4	N17 Tuam-Claremorris Road Scheme - preserve Emerging Route Corridor(400m). When approved Min.35m building setback
RT5	Inner Relief Roads/Streets Min.25m building setback, in areas of >50kph No minimum building setback - in areas of 50kph or less.
RT30	Improve traffic management on existing N17 at Kilmore/Farranmartin
RT31	Provide for future upgrades at M17/N17 Roundabout at Kilmore.
S.6	RESIDENTIAL & NEIGHBOURHOOD DEV.
RN1	Residential Neighbourhoods
S.9	NATURAL HERITAGE, ENV. & AMENITY
S.9.1.10	Natural Heritage & Biodiversity Objectives
NH5	Setback of 10m min from River Nanny & it's tributaries
NH11	Protect parkland and tree stands
NH19	30m buffer along the Clare River
S.9.4.6	Open Space, Amenity & Green Network Objs.
OAG2	Walkway along railway corridor
OAG4	Maintain Teampall Jarlath Church & graveyard
OAG5	Preserve pedestrian links / amenity wedges
OAG9	Enhance linkages within the 'green network'

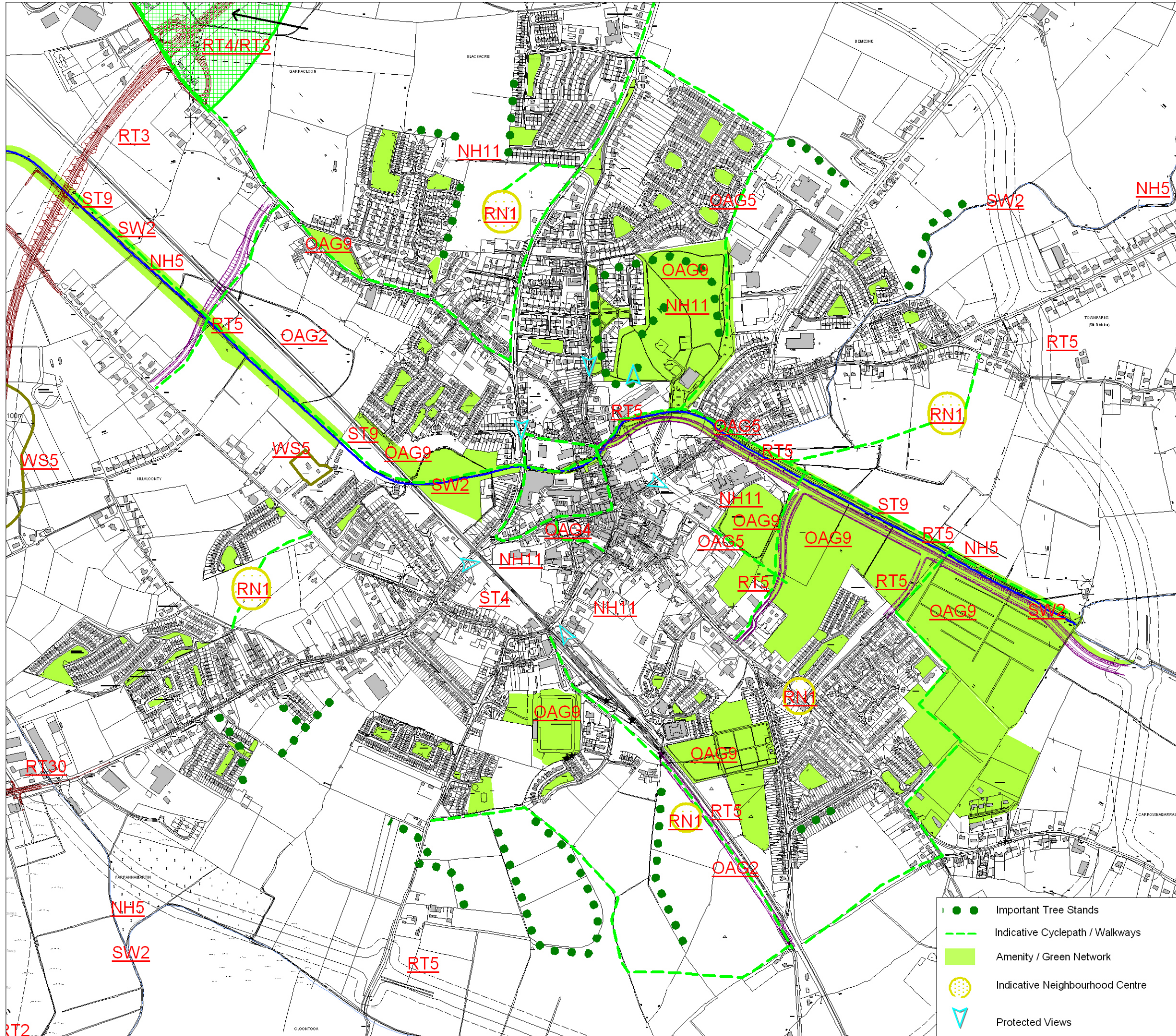
**NOTE:** This map should be read in conjunction with the full objectives in the Plan.

- Inner Relief Road/Inner Relief Streets
- N17 Tuam Bypass Scheme (Type 2 Dual Carriageway)
- M18/M17 Gort to Tuam (Motorway)
- N17 Tuam to Claremorris Road Scheme
- Emerging Preferred Route Corridor (overlap between N17 Tuam - Claremorris Road Scheme & N17 Tuam Bypass Scheme)

- Draft LAP Boundary
- EM - Environmental Management Area.
- [cSAC] Candidate Special Area of Conservation
- Important Tree Stands
- Indicative Cyclepath / Walkways
- Amenity / Green Network
- Indicative Neighbourhood Centre
- Protected Views



**TUAM LAP 2011-2017  
MAP 2A Specific Objectives/  
Green Network**



KEY	Description
S.3	SERVICES & INFRASTRUCTURE
S.3.1.3	Water services objectives
WS5	Provide/Protect 100m buffer around the WTP
	Appropriate buffer zones around any other TP
S.3.2.3	Surface Water & Flooding Objectives
SW2	Protect floodplains & areas along river banks
S.4	TRANSPORTATION & MOVEMENT
S.4.1.3	Sustainable Transport Objectives
ST4	Connect Mart Site to Railway Station
ST9	Develop River Nanny pedestrian greenway
	Strategic Routes
RT2	M18/17- Min. 90m building setback
RT3	N17 Tuam Bypass Scheme - Min. 35m building setback, Unless 400m Reservation applies.
RT4	N17 Tuam-Claremorris Road Scheme - preserve Emerging Route Corridor(400m). When approved Min.35m building setback
RT5	Inner Relief Roads/Streets Min.25m building setback, in areas of >50kph No minimum building setback - in areas of 50kph or less.
RT30	Improve traffic management on existing N17 at Kilmore/Farranmartin
RT31	Provide for future upgrades at M17/N17 Roundabout at Kilmore.
S.6	RESIDENTIAL & NEIGHBOURHOOD DEV.
RN1	Residential Neighbourhoods
S.9	NATURAL HERITAGE, ENV. & AMENITY
S.9.1.10	Natural Heritage & Biodiversity Objectives
NH5	Setback of 10m min from River Nanny & it's tributaries
NH11	Protect parkland and tree stands
NH19	30m buffer along the Clare River
S.9.4.6	Open Space, Amenity & Green Network Objs.
OAG2	Walkway along railway corridor
OAG4	Maintain Teampall Jarlath Church & graveyard
OAG5	Preserve pedestrian links / amenity wedges
OAG9	Enhance linkages within the 'green network'

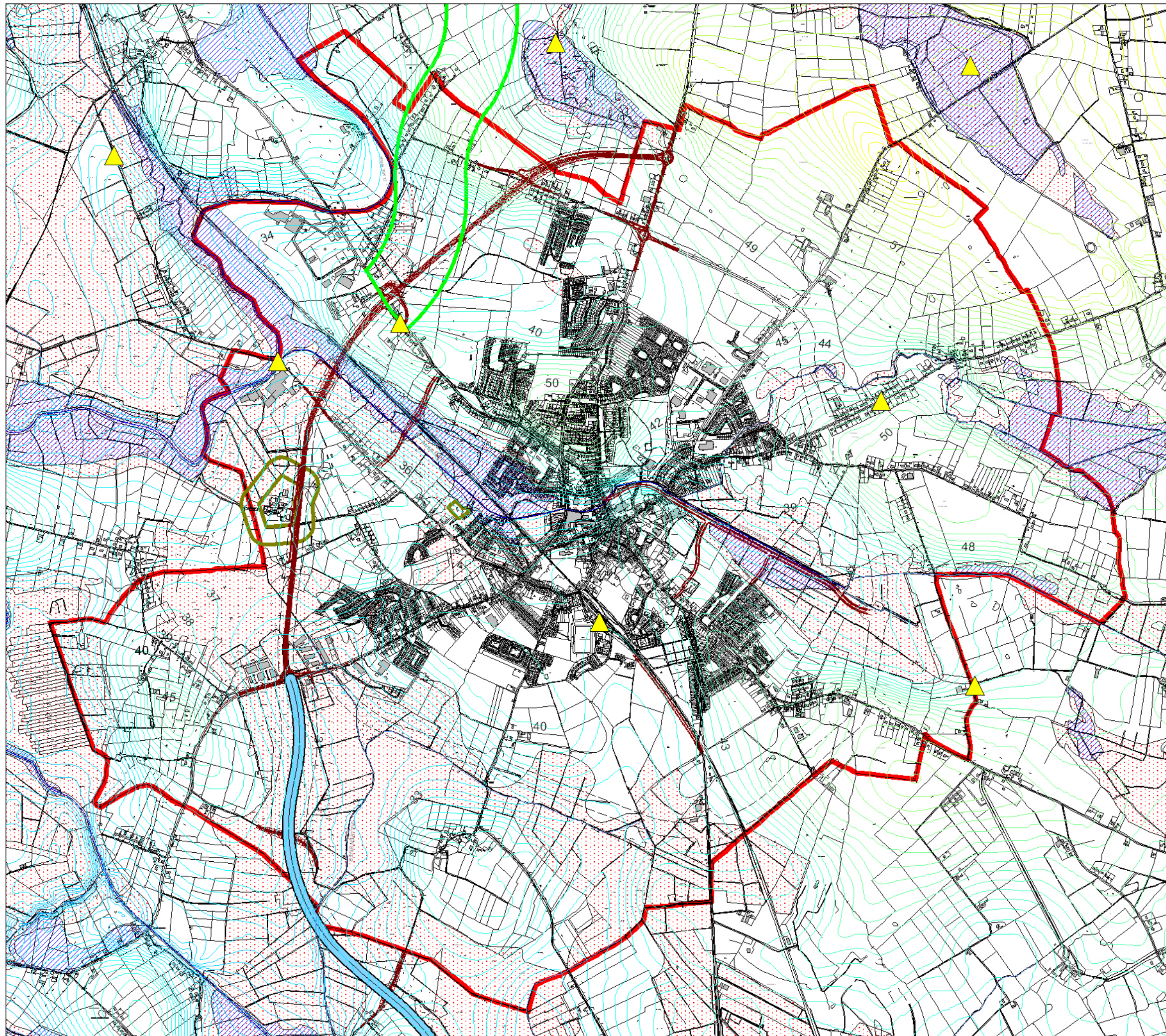
**NOTE:** This map should be read in conjunction with the full objectives in the Plan.

- Inner Relief Road/Inner Relief Streets
- N17 Tuam Bypass Scheme (Type 2 Dual Carriageway)
- N17 Tuam to Claremorris Road Scheme
- Emerging Preferred Route Corridor (overlap between N17 Tuam - Claremorris Road Scheme & N17 Tuam Bypass Scheme)

- Important Tree Stands
- Indicative Cyclepath / Walkways
- Amenity / Green Network
- Indicative Neighbourhood Centre
- Protected Views



**TUAM LAP 2011-2017  
MAP 2B Specific Objectives/  
Green Network  
(Town Centre)**



-  LAP Plan Boundary
-  Benefiting Land
-  Historical Flood Plains - OS 1842 Survey
-  Recorded/Historical Flood Events
-  1m contours
-  Inner Relief Road/Inner Relief Streets
-  N17 Tuam Bypass Scheme (Type 2 Dual Carriageway)
-  M18/M17 Gort to Tuam (Motorway)
-  N17 Tuam to Claremorris Road Scheme

**Map Disclaimer:**

Historical Flood data is provided to identify areas of historical flooding and to broadly highlight areas adjacent to historic flooding. It shall be used for general guidance only. The SFRA map when completed shall accompany this historical flood data map and shall be used to inform Development Management decisions.



**TUAM LAP 2011-2017  
Map 3A  
Historical Flood Data**



- LAP Plan Boundary
- Benefiting Land
- Historical Flood Plains - OS 1842 Survey
- Recorded/Historical Flood Events
- 1m contours
- Inner Relief Road/Inner Relief Streets
- N17 Tuam Bypass Scheme (Type 2 Dual Carriageway)
- M18/M17 Gort to Tuam (Motorway)
- N17 Tuam to Claremorris Road Scheme

**Map Disclaimer:**  
 Historical Flood data is provided to identify areas of historical flooding and to broadly highlight areas adjacent to historic flooding. It shall be used for general guidance only. The SFRA map when completed shall accompany this historical flood data map and shall be used to inform Development Management decisions.



**TUAM LAP 2011-2017  
 Map 3B  
 Historical Flood Data  
 (Town Centre)**

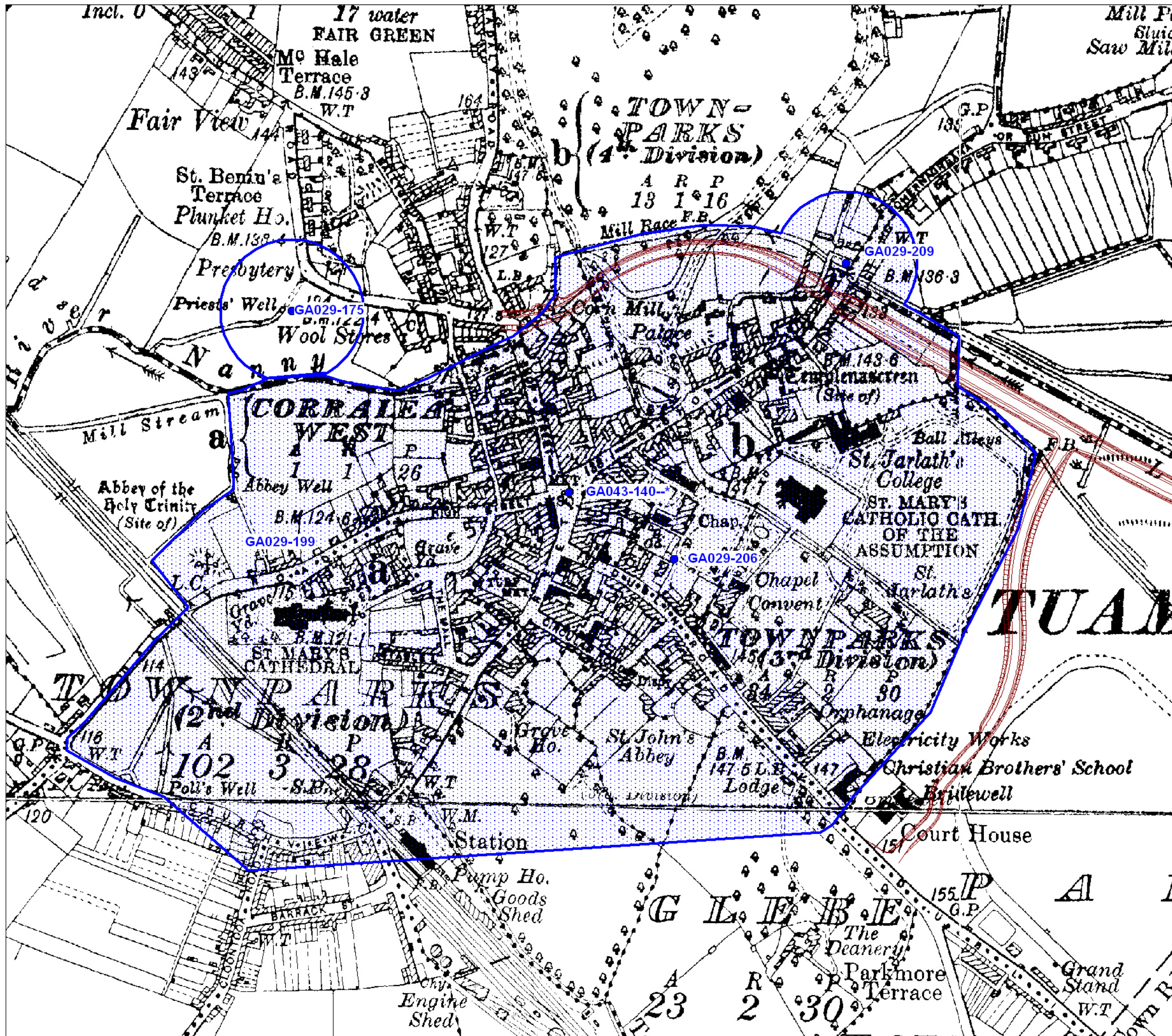


- LAP Plan Boundary
- Recorded Sites and Monuments
- [ZAP] Zone of Archaeological Potential

- Proposed Inner Relief Roads/Streets
- Proposed N17 Bypass



**TUAM LAP 2011-2017**  
**MAP 4A**  
**RECORD OF**  
**MONUMENTS AND PLACES**



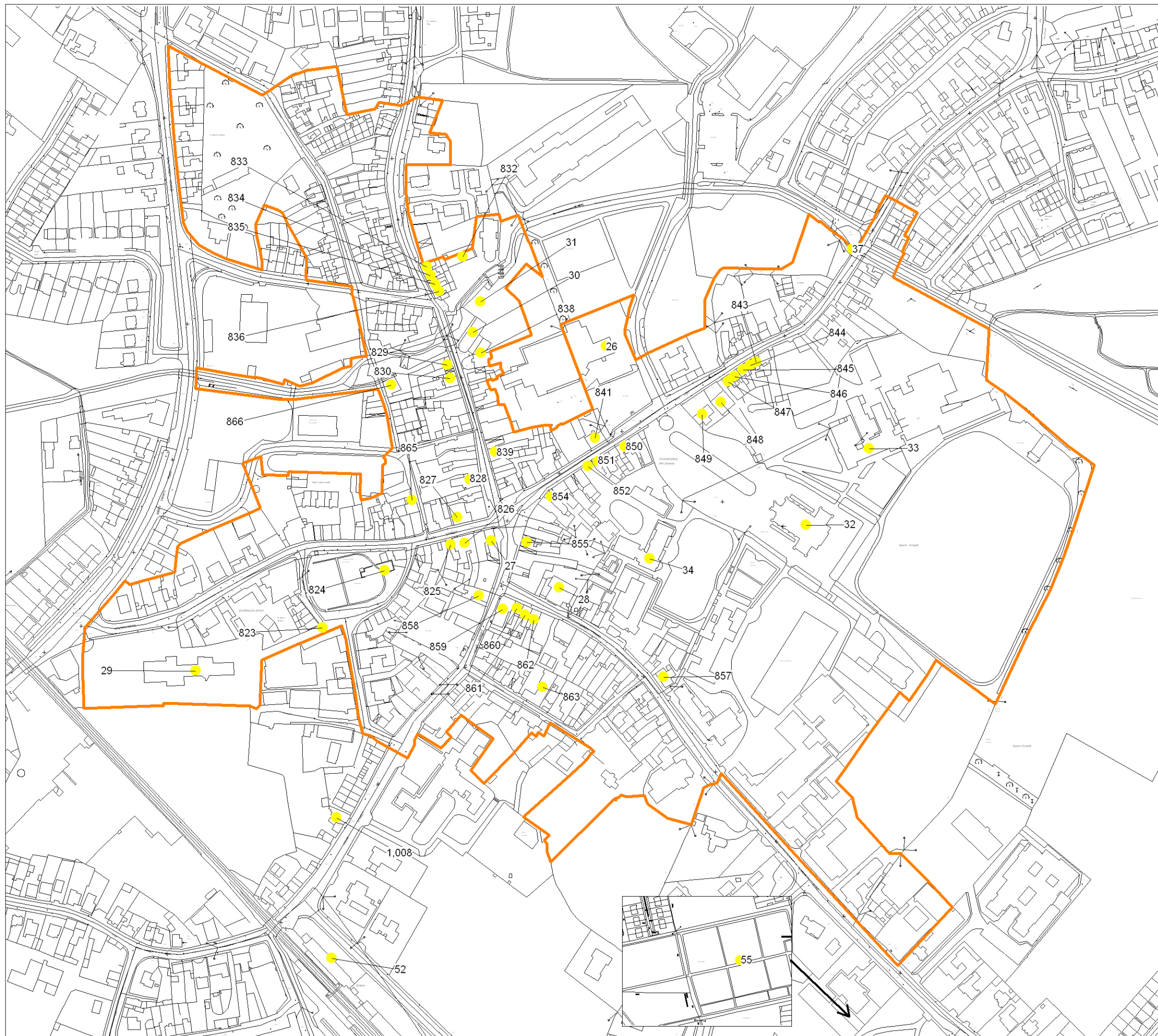
- LAP Plan Boundary
- Recorded Sites and Monuments
- [ZAP] Zone of Archaeological Potential

- Proposed Inner Relief Roads/Streets
- Proposed N17 Bypass



TUAM LAP 2011-2017  
 MAP 4B  
 RECORD OF  
 MONUMENTS AND PLACES  
 &  
 ZONE OF ARCHAEOLOGICAL POTENTIAL  
 [ZAP]





- RPS - Record of Protected Structures
- ACA - Architectural Conservation Area

**TUAM LAP 2011-2017  
MAP 5A  
Protected Structures (RPS)  
&  
Architectural Conservation  
Area (ACA)**